

# BILL OF MATERIAL INSTRUCTIONS

A BILL OF MATERIALS WILL HELP YOU KEEP YOUR PARTS ORGANIZED. USE SHEET 2 TO COMPLETE THIS BILL OF MATERIALS  
ALL DIMENSIONS HAVE A  $\pm \frac{1}{32}$ " TOLERANCE

# BILL OF MATERIALS

#	QTY	DESCRIPTION	MATERIAL	THICKNESS	WIDTH	LENGTH	NOTES
1	3	HORIZONTAL	Solid Stock	$\frac{3}{4}$ "	5 $\frac{1}{2}$ "		Use finish nails and wood glue to attach
2	2	VERTICAL	Solid Stock	$\frac{3}{4}$ "	5 $\frac{1}{2}$ "		Use finish nails and wood glue to attach

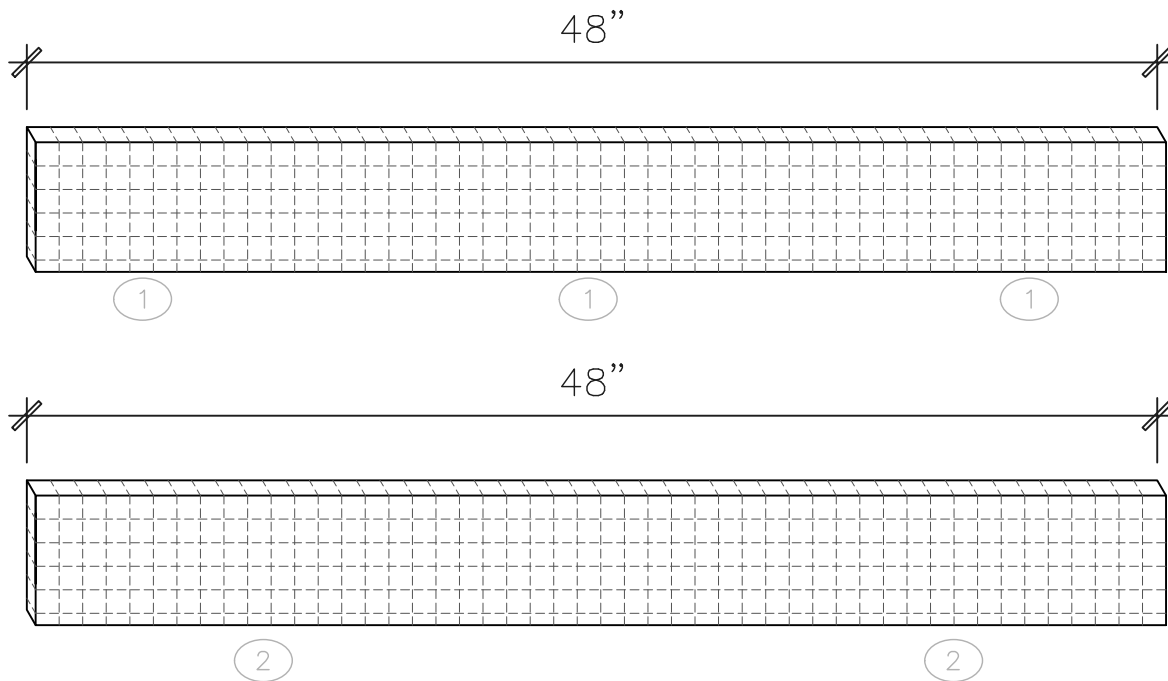
## MATERIAL LAYOUT INSTRUCTIONS

Once you've completed your Bill of Materials, lay out your parts on the corresponding material by drawing lines vertically and horizontally.

Part Number 1 (3 OF THEM) should come from the first piece

Part Number 2 (2 OF THEM) should come from the second piece

Note: Each square is scaled to a 1" square.

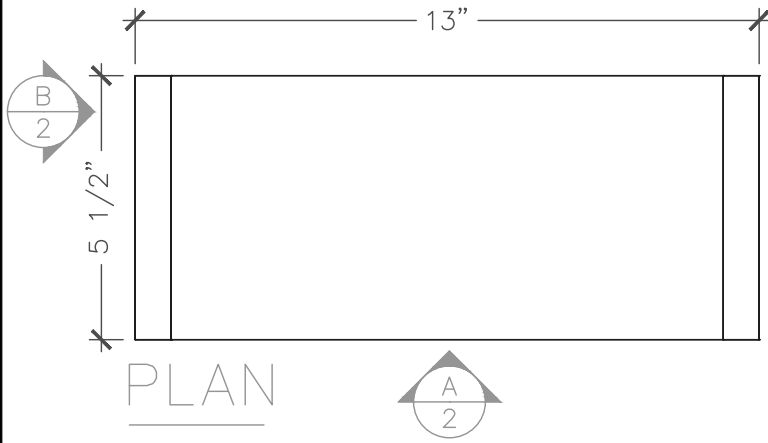


SkillsUSA

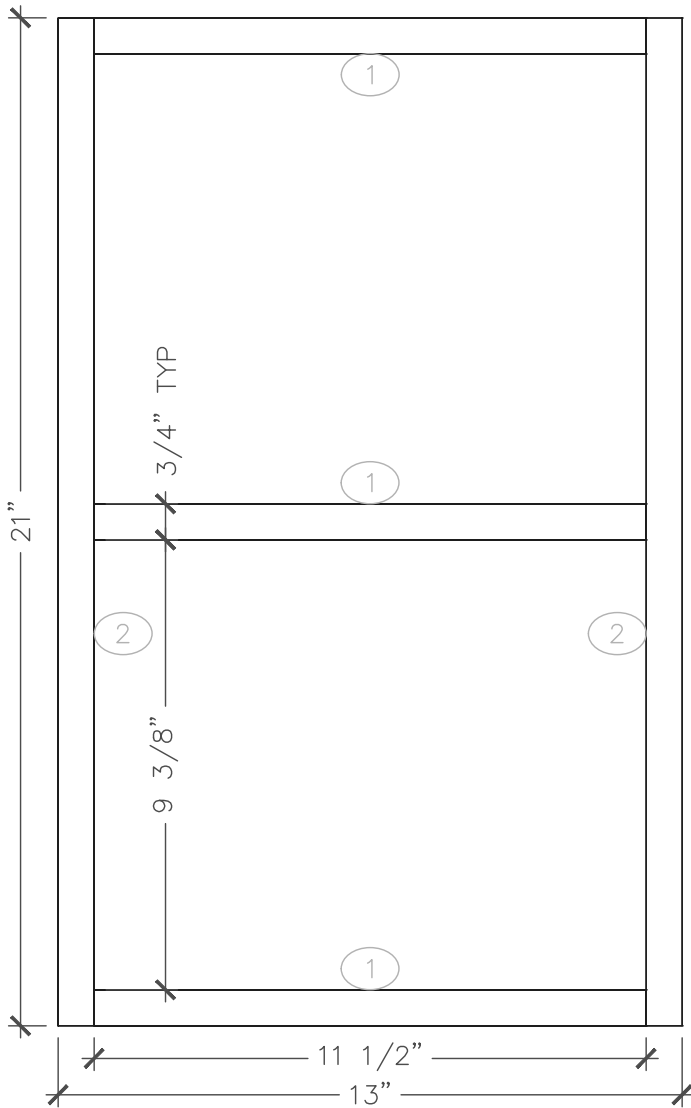
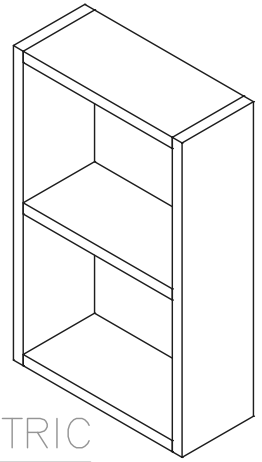
CALIFORNIA  
REGIONAL CONTEST

INTRO WOOD  
BILL OF MATERIALS  
AND MATERIAL LAYOUT

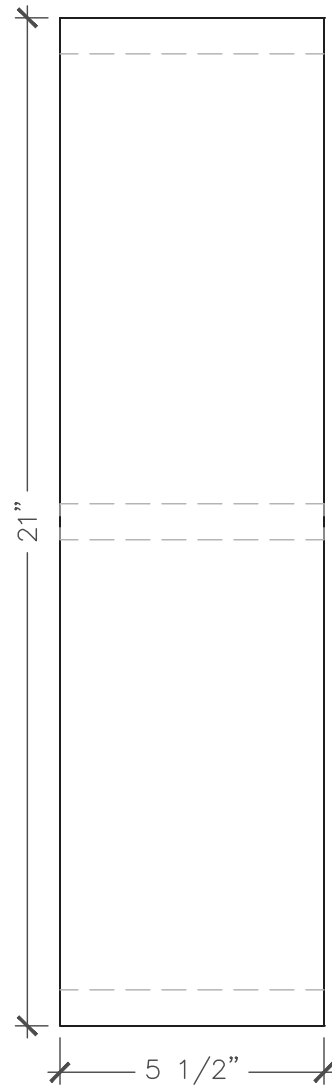
DATE: 2021	JOB #: IW21
DRAWN BY: AK	SCALE: NTS
DWG. NO. 1	



SCALE: 3"=1'-0"



SCALE: 3"=1'-0"



SCALE: 3"=1'-0"

**SkillsUSA**  
**CALIFORNIA**  
**REGIONAL CONTEST**

INTRO WOOD  
 RECTANGULAR SHELF

DATE: 2021	JOB #: IW21
DRAWN BY: AK	SCALE: NTS
DWG. NO. 2	