

# BILL OF MATERIAL INSTRUCTIONS

A BILL OF MATERIALS WILL HELP YOU KEEP YOUR PARTS ORGANIZED. COMPLETE THIS BILL OF MATERIALS  
ALL DIMENSIONS HAVE A  $\pm \frac{1}{32}$ " TOLERANCE

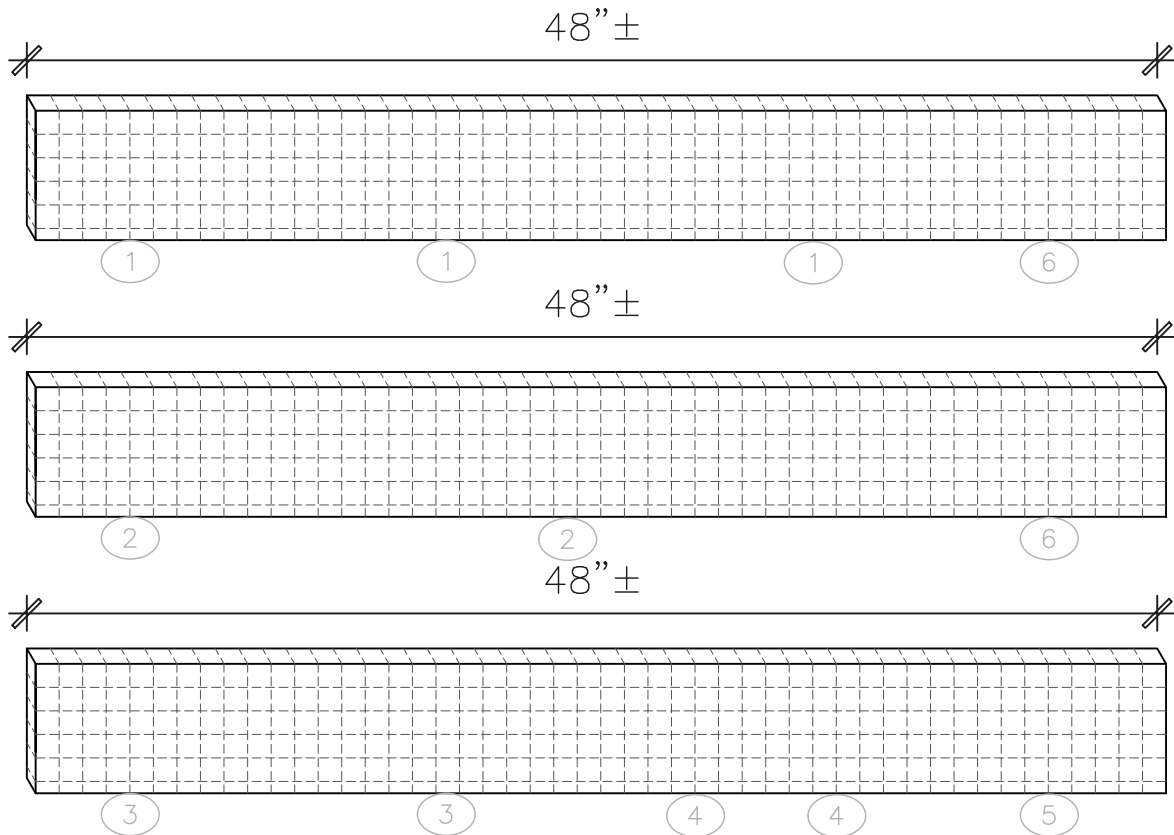
## BILL OF MATERIALS

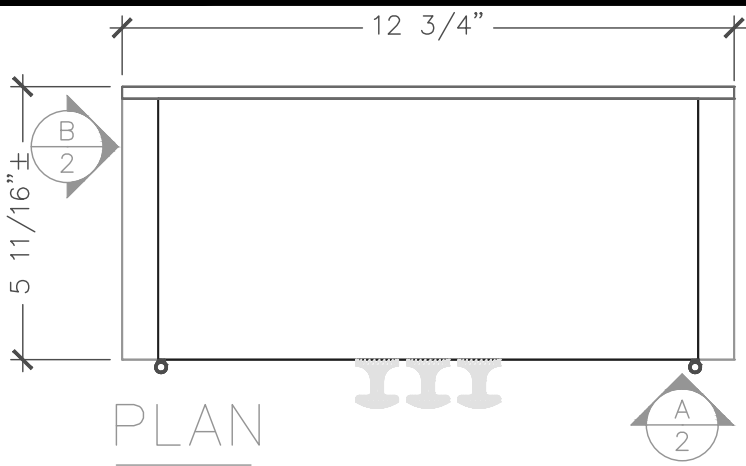
#	QTY	DESCRIPTION	MATERIAL	THICKNESS	WIDTH	LENGTH	NOTES
1	3	TOP/ SHELF/ BOTTOM	Solid Stock	$\frac{3}{4}$ "	$5 \frac{7}{16}$ " $\pm$		Use screws and wood glue to attach
2	2	ENDS	Solid Stock	$\frac{3}{4}$ "	$5 \frac{7}{16}$ " $\pm$		Use screws and wood glue to attach
3	2	DRAWER FRONT/BACK	Solid Stock	$\frac{3}{4}$ "	$5 \frac{7}{16}$ " $\pm$		Use finish nails and wood glue to attach
4	2	DRAWER SIDES	Solid Stock	$\frac{3}{4}$ "	$5 \frac{7}{16}$ " $\pm$		Use finish nails and wood glue to attach
5	1	DRAWER BOTTOM	Solid Stock	$\frac{3}{4}$ "	$3 \frac{7}{8}$ " $\pm$		Use finish nails and wood glue to attach
6	2	DOORS	Solid Stock	$\frac{3}{4}$ "	$5 \frac{7}{16}$ " $\pm$		Use hinges and hinge screws to attach
7	1	BACK	PLYWOOD	$\frac{1}{4}$ "			Use finish nails and wood glue to attach

## MATERIAL LAYOUT INSTRUCTIONS

Once you've completed your Bill of Materials, lay out your parts on the corresponding material by drawing lines vertically and horizontally. Note: Each square is scaled to a 1" square. Cabinet Back to be made from  $\frac{1}{4}$ " plywood sheet.

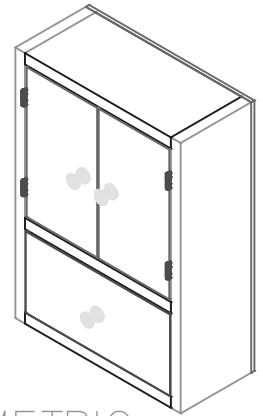
### MATERIAL LAYOUT



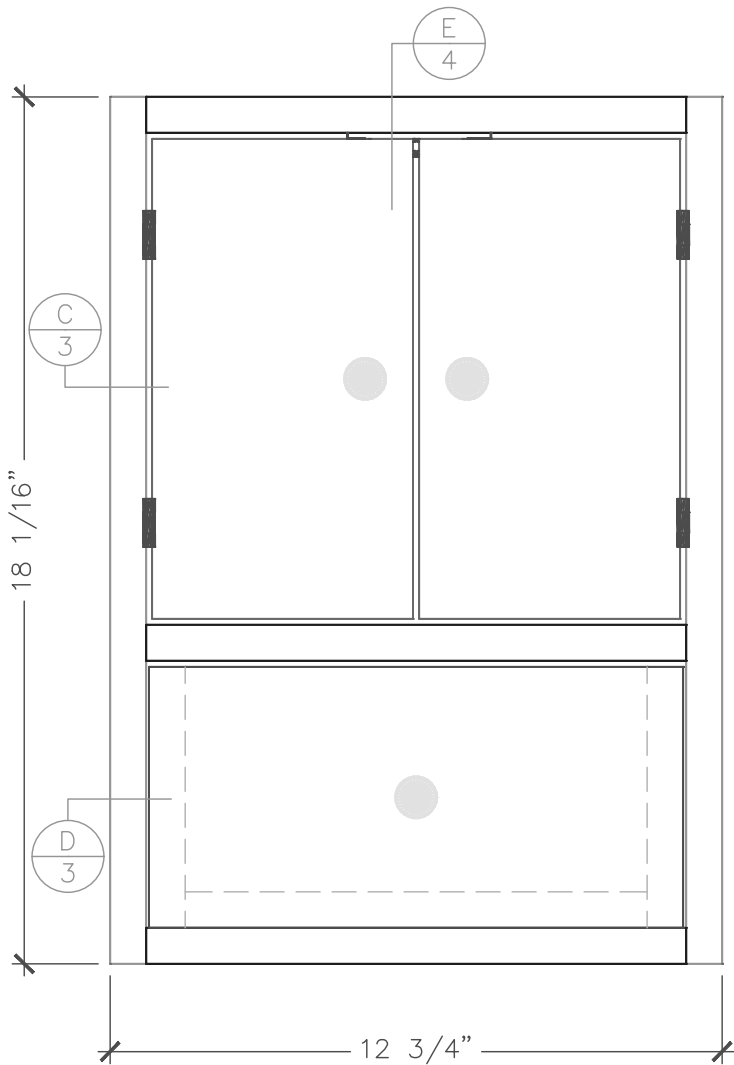


PLAN

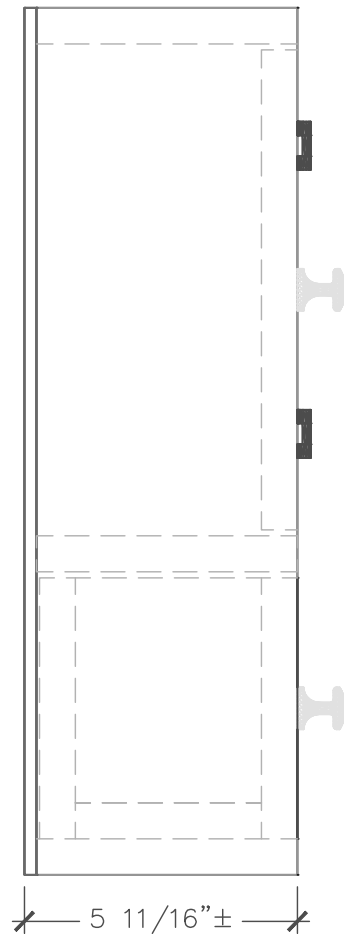
SCALE: 3"=1'-0"



ISOMETRIC



A ELEVATION  
SCALE: 3"=1'-0"

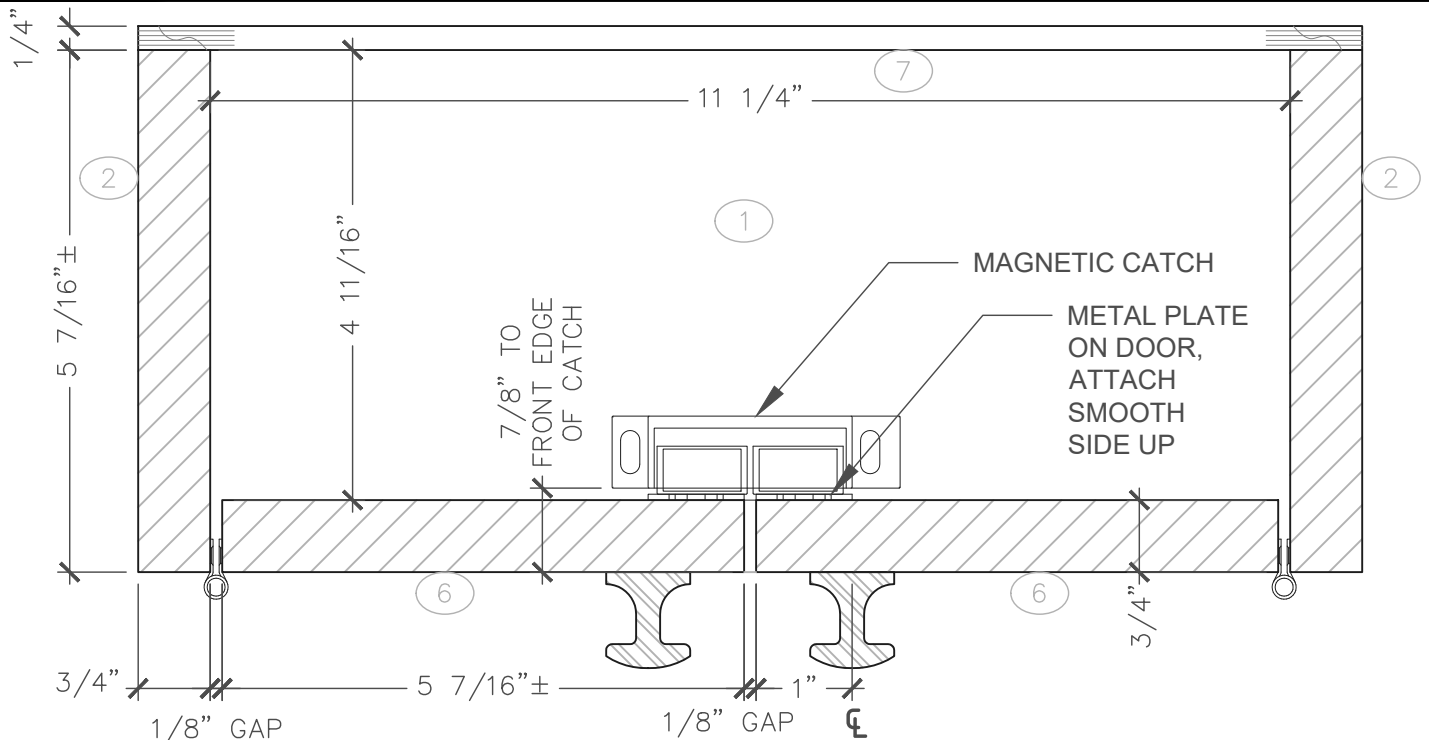


B ELEVATION  
SCALE: 3"=1'-0"

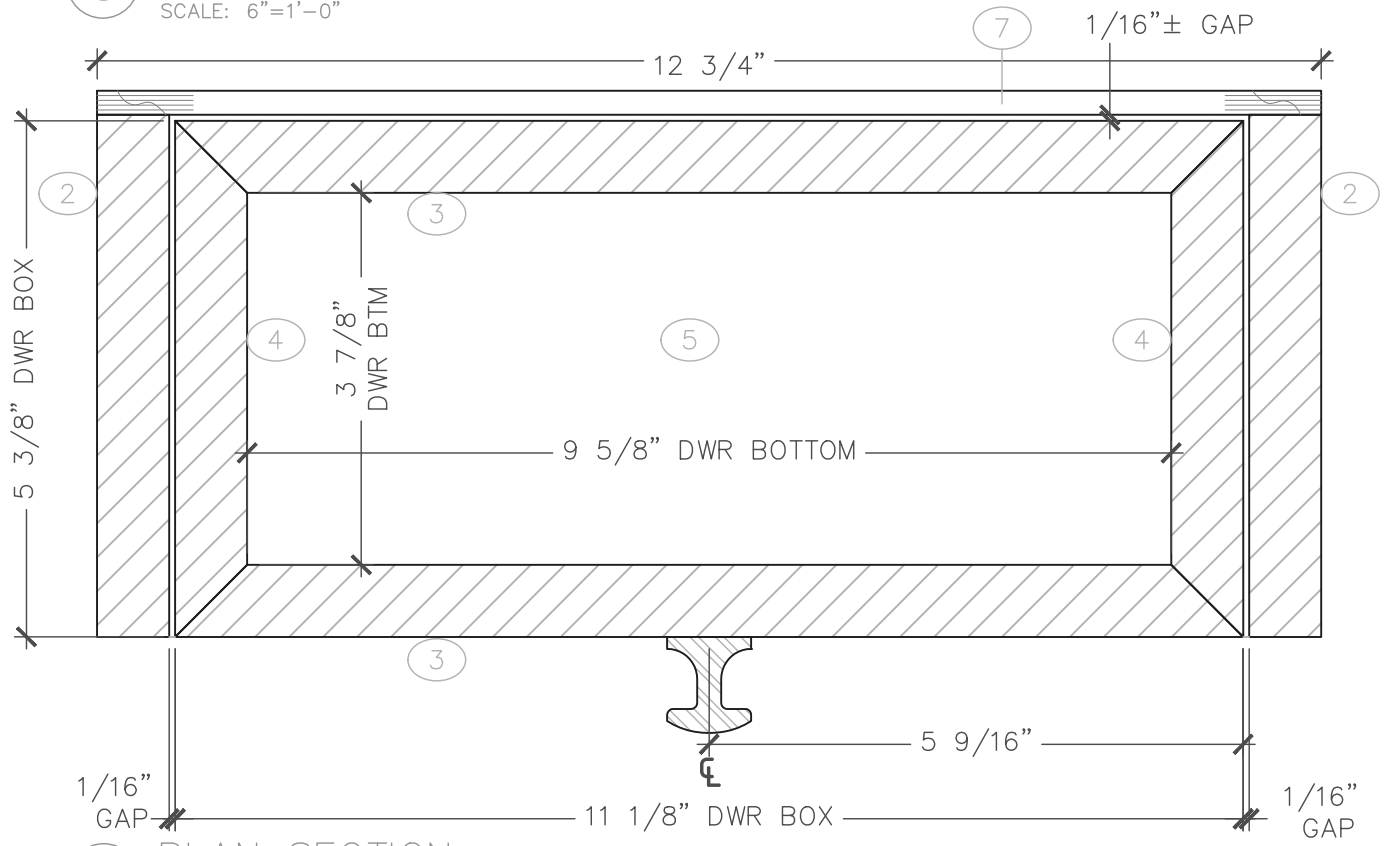
**SkillsUSA**  
CALIFORNIA  
STATE CONTEST

CABINETMAKING  
SMALL CABINET  
PLAN & ELEVATIONS

DATE: 2021	JOB #: CM21
DRAWN BY: AK	SCALE: NTS
DWG. NO. 2	



**C** REFLECTED PLAN SEC  
SCALE: 6"=1'-0"

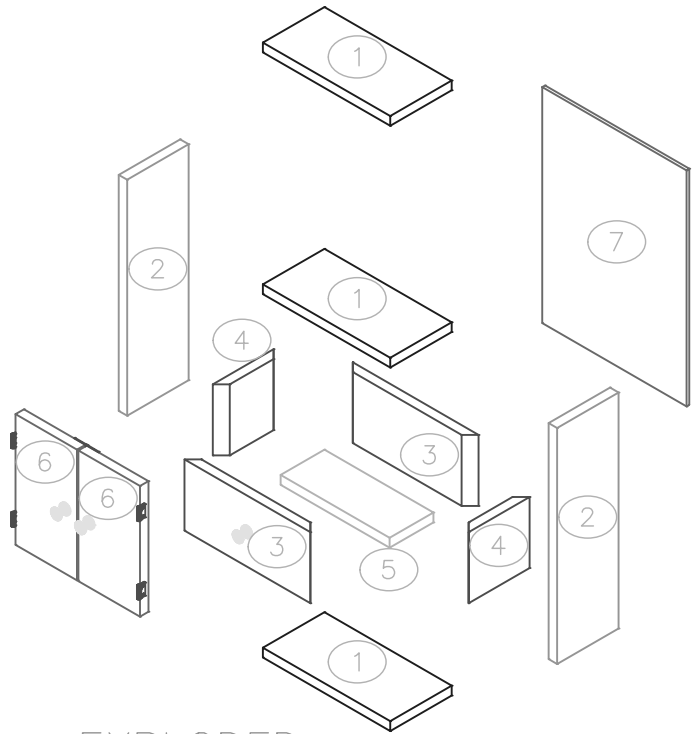
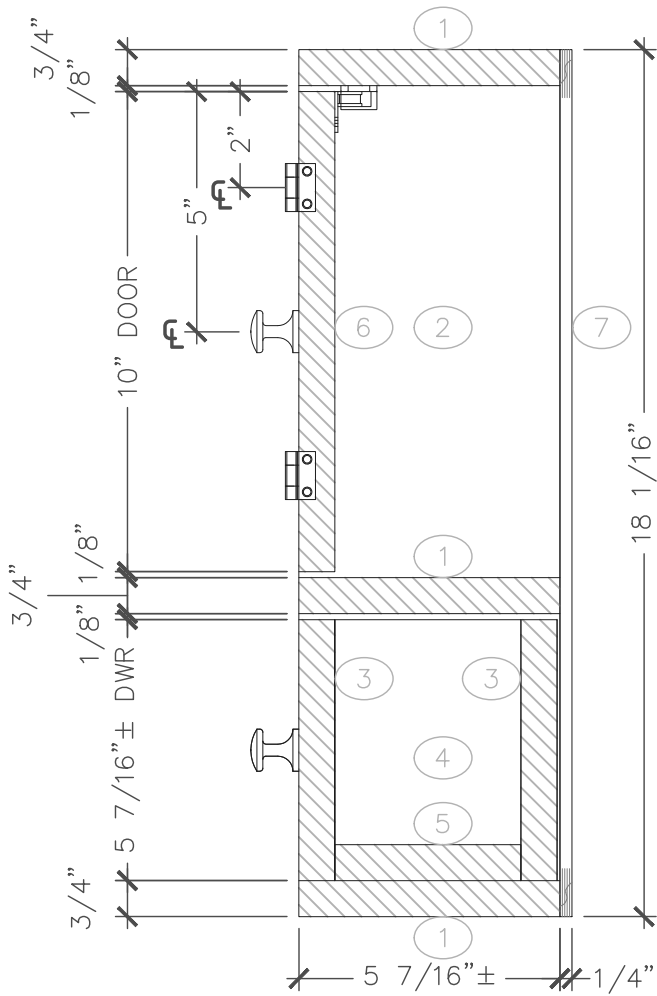


**D** PLAN SECTION  
SCALE: 6"=1'-0"

**SkillsUSA**  
CALIFORNIA  
STATE CONTEST

CABINETMAKING  
SMALL CABINET  
PLAN SECTIONS

DATE: 2021	JOB #: CM21
DRAWN BY: AK	SCALE: NTS
DWG. NO. 3	



EXPLODED

NOTES:

**E** VERTICAL SEC  
SCALE: 3"=1'-0"